



JUMBO LIFT 4000 NT BMW

Flexible platforms:

The ramps can be locked and unlocked to adjust the platform length to long or short vehicles



NT-Technologie
from Nussbaum



THE EXPERT FOR MULTI-TASKING

- Adjustable length of the platforms
- NT and patented HyperFlow® technologies: 100% hydraulic, 100% safe
- Flexible width during installation, no compressed air connection required, quick change of location
- Suitable for a wide range of vehicles, including small vans with a short wheelbase
- Very flat design and inground installation: ideal for lowered vehicles



6 REASONS WHY THE JUMBO IS LOW-MAINTENANCE

With its **compact oil submerged power unit** and **high-quality steel construction**, the JUMBO is low-maintenance and durable.

Synchronisation is **automatically regulated** during each full lifting cycle. Thanks to its **redundant hydraulic system**, the JUMBO does **not require a safety latch**.

With few **electrical and no pneumatic parts and no mechanical safety latch**, the JUMBO is **almost completely maintenance-free**.

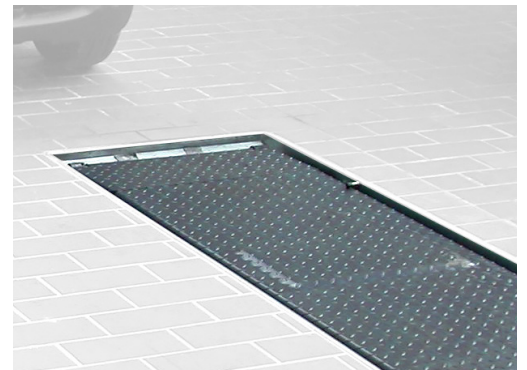
Lubrication nipples on all bolts ensure smooth operation over a long period of time.

THE RIGHT DATA FOR SUCCESS

Lifting capacity (kg)	4000
Lifting / lowering time approx. (sec)	35
Lifting height (mm)	2000
Drive-on height (mm)	135
Recommended total width (mm)	2120
Platform width (mm)	610
Platform length (mm)	1460-2160
Motor (kW)	3
BMW article number	BMW 69 501 068



Very flat design: Ideal for lowered vehicles



Inground installation possible for lowered vehicles, ideally with optional installation tray

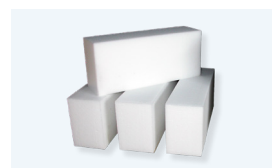
ACCESSORIES



Rubber pyramid block



Polymer pads 50x150x340 mm



Polymer pads 100x150x340 mm

More accessories available